

PANHANS

QUALITÄT SEIT 1918



546|10

PLANER MACHINE

MADE IN GERMANY

HOKUBEMA
www.hokubema.com

WWW.PANHANS.DE

546|10



MOTOR POWER
7,5kW / 10 hp



VOLTAGE
400 V / 50 Hz



SPACE REQUIREMENT
2650x1770 mm

TECHNICAL SPECIFICATIONS

Planing width	630 mm
Planing height	3–250 mm
Table length:	
Jointer	2555 mm
Thicknesser	1100 + 400 mm
Maschine height	912 mm
Chip removal:	
Jointer	max. 5 mm
Thicknesser	max. 8 mm
Knife shaft speed	5000 rpm
Feed motor power	0,55 kW / 0,8 hp 0,75 kW / 1,0 hp
Feed	7+14 m/min.
Suction socket	2x ø160 mm
Maschine weight	1210 kg

Ergonomic machine dimensions

Finely planed machine tables

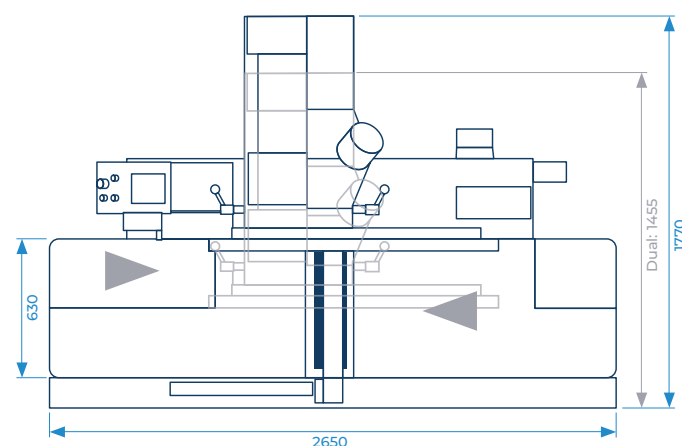
PANHANS traditional cutterblock with 4 strip planing knives and brass setting devices

JOINTER:

- Electromotive adjustment of the feed table via push-button actuation
- Bridge guard TXF 1570 with foldable cover

THICKNESSER:

- Feed rollers with pendulum bearings
- Segmented rubber infeed and outfeed roller
- 2 feed speeds by pole-changing feed motor
- Segmented pressure pad
- Thicknessing table without table sliding rollers
- Electrical height adjustment of the thicknessing table
- Positioning control „easy drive“

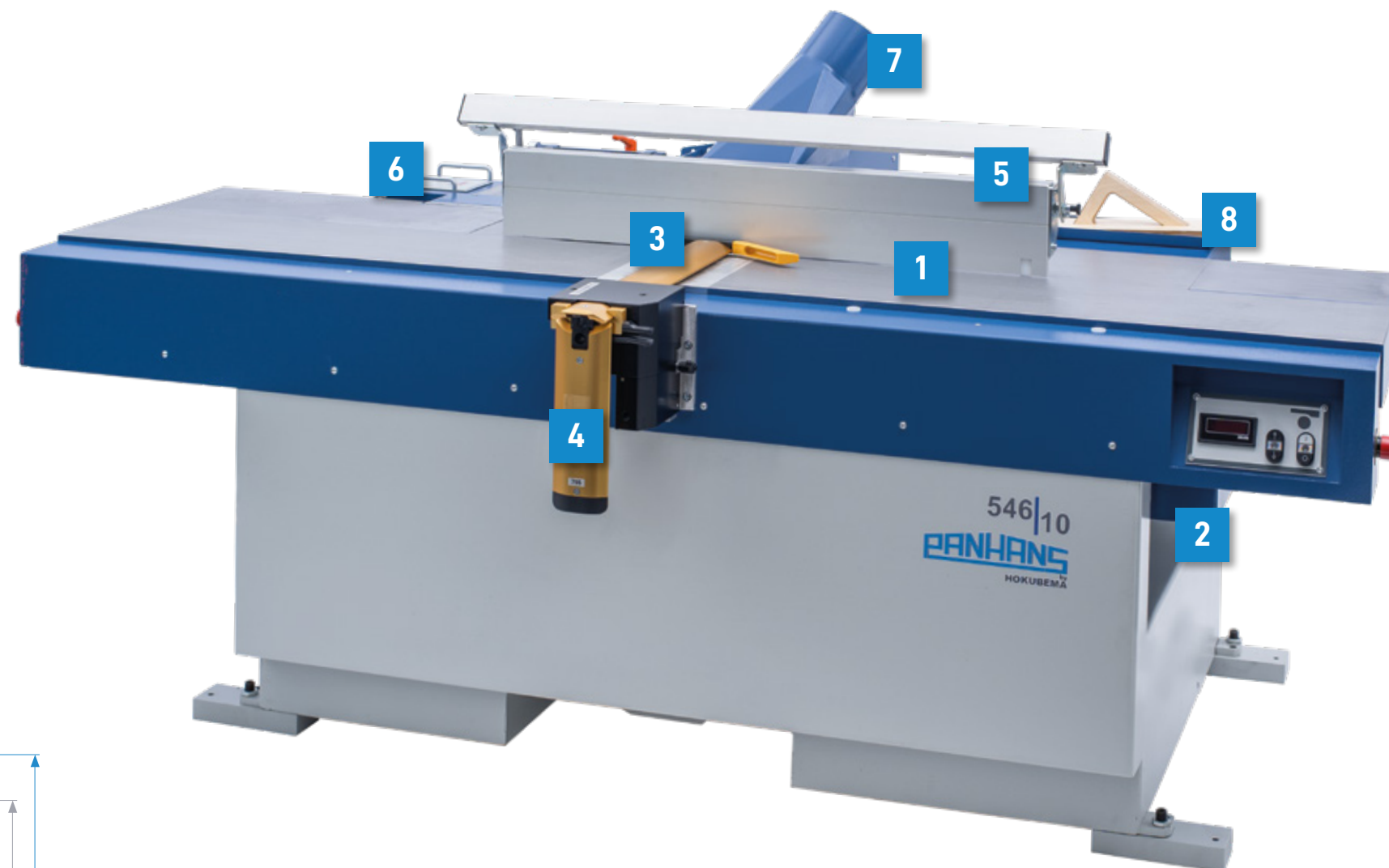


Our Combined Planer 546|10 (TwinPlan) is unique in the market of planers. It offers the advantage that it does not have to be retrofitted in order to use it as a jointer or thicknesser.

HIGHLIGHT

DRESSING AND THICKNESS PLANING WITHOUT COMPLEX REBUILDING

Our 546|10 offers you the absolute advantage of dressing and thickness planing without having to fold down the table structure. This makes this combined planer unique on the market.



FUNCTIONS

- 1 JOINTER**
On the 1100 mm long machine table with fine-planed surface, features of the proven PANHANS planing machines are available.
- 2 THICKNESSER**
The thickness planing function can be put into operation without conversion work. This enables the machine to work ergonomically.
- 3 BLADE SHAFT**
Thanks to the pulling cut, our planing machines offer you the optimum planing result with the legendary spiral knife shafts.
- 4 PLANING PROTECTION**
Safety is of paramount importance here. Areas of the knife shaft that are not currently in use are covered by an easily adjustable protective device.
- 5 JOINTING FENCE**
The swivelling stop can be quickly and easily adjusted to different angles (0° – 45°). The integrated auxiliary stop, which can also be swivelled, is used for safe hand resting on narrow workpieces.
- 6 CONTROL PANEL**
Electrical adjustment via hand-wheel with LED display and an accuracy of 0.1 mm.
- 7 SUCTION NOZZLES**
Two suction nozzles ensure optimum extraction both for planing and thicknessing.
- 8 SI-TEC PRODUCT**
Z Feeder for safe planing of short workpieces. Easy to order in our online shop:
www.hokubema.com

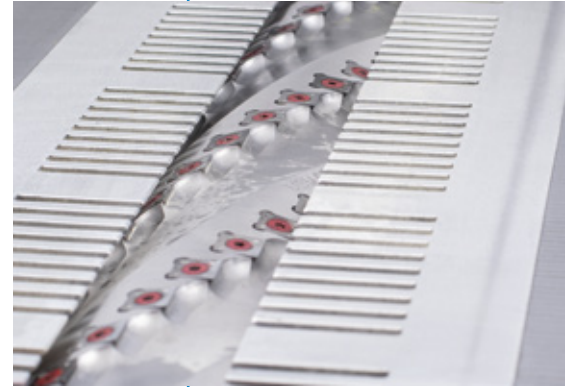
THE PANHANS-PASSION:

The machine at your side:
strong, solid and lifelong.



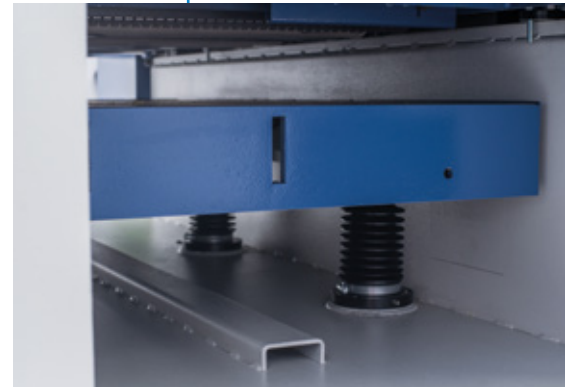
FULL STEEL SPIRAL KNIFE SHAFT

Due to their pulling cut, the 6 spiral-shaped rows of knives of the all-steel spiral cutter cut with significantly improved cut quality and longer service life. The enormous noise reduction is another reason for investing in this type of cutting tool.



THICKNESSER

The thickness planing table of our combined planing machine is mounted on four solid trapezoidal threaded spindles with two additional lateral guides to prevent tipping. It is guided in parallel and designed for high loads. The absolute precision achieves an optimum planing pattern.



JOINTING FENCE

The continuously variable swivelling stop can be adjusted quickly and easily to angles between 0° - 45°. The set angle is read on a clearly legible scale. The integrated auxiliary stop, which can also be swivelled, is used for safe hand resting on narrow workpieces.



CONTROL PANEL

The height of the thickness planing table can be adjusted electrically with an accuracy of 0.1 mm via handwheel. The set height is indicated by an LED display. Afterwards the height adjustment can be started via the start button.



OPTIONS

- ⊕ **ALL-STEEL KNIFE SHAFT**
With 4 Tera reversible knives, standard quality for planing width 630 mm of the standard knife shaft.
- ⊕ **FULL STEEL SPIRAL KNIFE SHAFT**
With 6 spiral-shaped knife rows, 27 rotating and exchangeable carbide cutters per row with 4 cutting edges for improved cutting quality through pulling cut, longer service life and enormous noise reduction..
- ⊕ **THIN PLANER KNIVES**
Type "PANHANS Granat" with 630 x 35 x 3 mm, standard quality for the standard knife shaft.
- ⊕ **TERSA DISPOSABLE REVERSIBLE KNIVES**
Standard quality 630 mm for the Tera knife shaft.
- ⊕ **CLEANING SET FOR SPIRAL KNIFE SHAFTS**
Case for cleaning and care of the knife shaft.
- ⊕ **TABLE SLIDING ROLLERS**
2 pieces with fine adjustment in the thickening table incl. ribbed steel infeed rollers and rubber outfeed rollers.
- ⊕ **SWITCHABLE OUTFEED**
400 mm for short parts (instead of the standard table extension for parts from approx. 320 mm length).
- ⊕ **THICKNESS TABLE EXTENSION**
1000 mm length and 630 mm width with automatic height adjustment.
- ⊕ **LIFT TABLE ADJUSTABLE**
At a central point for sharpenable planing knives to adjust the jointer delivery table to the knife shaft flight circles.
- ⊕ **POSITIONING CONTROL**
With numeric keypad for direct measurement input.
- ⊕ **STEEL INFEED ROLLER**
Spiral toothed instead of rubber infeed roller.
- ⊕ **STEEL LIMB HEELING ROLLER**
Pendulum bearing for simultaneous planing of strips with max. thickness tolerance of 3.0 mm.
- ⊕ **FEED MOTOR FREQUENCY CONTROLLED**
Infinitely variable feed from 3 - 24 m/min. (instead of 7 + 14 m/min.).
- ⊕ **PLANING PROTECTION DEVICE**
With 2-part, foldable cover and spring-loaded contact pressure.



Scan QR code and go directly to Combined Planer 546|10



PANHANS

QUALITÄT SEIT 1918

PANHANS IS A BRAND OF
HOKUBE|MA Maschinenbau GmbH

📍 Anton-Günther-Straße 3-7
D-72488 Sigmaringen

☎ Tel. +49 (0)7571 755-0
Fax +49 (0)7571 755-222

✉ info@hokubema-panhans.de

🌐 www.panhans.de

🛒 www.hokubema.com

📱 #Holzkunststoffbearbeitungsmaschinen

MADE IN GERMANY

HOKUBE|MA

PANHANS
QUALITÄT SEIT 1918

SIITEC
SICHERHEITSTECHNIK

